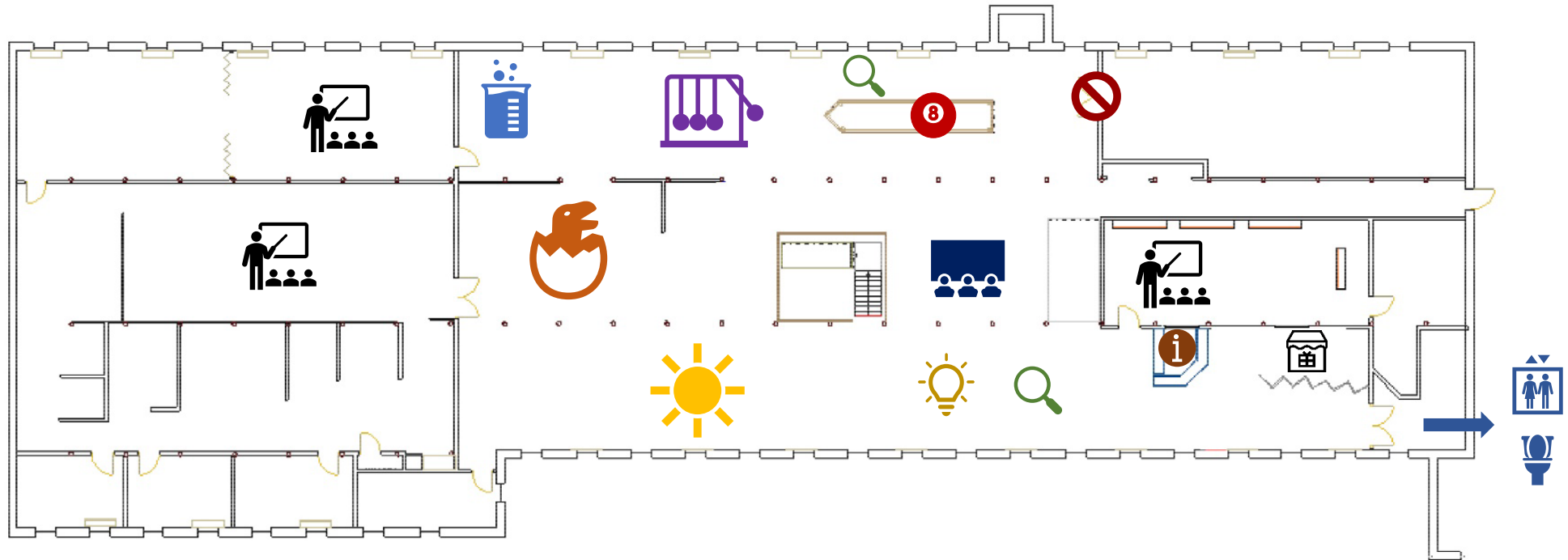


# Sensory Map SEE Science Center 2024 - 4<sup>th</sup> Floor (Main Entrance)



## Symbols

Nano Exhibits 

Sun, Earth, Universe Exhibits 

Physics Exhibits 

Dinosaur Exhibits 

Stage 

Front Desk/Information Center 

Kitchen and Lab 

Pool Ball Falls 

Neon Sign 

Classroom 

Gift Shop 

Staff Only Areas 

## Nano Exhibits

City Balance - T B

Nano Blocks - T B

What Does Nano Mean for Us? - T

What's New About Nano? - T

Where Can You Find Nano? - T H S

Size Makes a Difference - L T

## Stage - L H

Ralph Baer Exhibit - L

Product of the Year - L T H

## Sun, Earth, Universe Exhibits

Whisper Dishes - M H

Questions about the Solar System - L T

Habitat on Mars - L T B

Mars Rovers - T

Detect the Invisible - L T

Questions About Earth - T

Gravity Expedition - L T

Questions about the Universe - H T

Message Board - T B

Satellite Build - L T B

The Sun - T

Gravity Well - L B T H

Ample Sample - L T H B

## Physics Exhibits

Magnetic Ball Wall - T L H B

Momentum Chair - L M B

Ball Drop - L H T

Green Blocks - T B

Air Cannon - T L H

Bernoulli Blower - T L H

## Dinosaur Exhibits

Dino Coloring - S H T B

Magnetic Scenes - T H

Wooden Dinosaurs - T L

Zoetrope - T L B

Dino Puppet Theatre - T

Dig Pit - L T S B

Dino Question Panels - L T

## Front Desk/Information Center

Kitchen and Lab - L T H 

Pool Ball Falls - L T H 

Neon Sign - L 

Classroom - L S B H T 

Gift Shop - L T 

Staff Only Areas 

## Senses Key

**L for Look** - Things that can be seen like the size shape and colors of objects.

**T for Touch** - Touch is how we Touch things, using hands or other parts of the body.

**S for Smell** - The ability to recognize and process scents, like food and other objects.

**M for Move** - The body's sense of space and movement. This is gross/large motor skills.

**B for Balance** - The body's sense of movement and balance. This includes fine motor skills.

**H for Hear** - The ability to process and recognize sounds using ears or vibration patterns.